

RODEO 2003 ONWARDS DELUXE AND WINCH BULL BAR

PRODUCT NUMBER
32/3448100 & 3448110

FITTING KIT NUMBER
6171781 / 6171800

WARNING

**FOR VEHICLES EQUIPPED WITH SRS AIRBAG
WHEN INSTALLED IN ACCORDANCE WITH THESE INSTRUCTIONS, THE FRONT
PROTECTION BAR DOES NOT AFFECT OPERATION OF THE SRS AIRBAG.**

TAKE NOTE OF THE FOLLOWING:

- **THIS PRODUCT MUST BE INSTALLED EXACTLY AS PER THESE INSTRUCTIONS USING ONLY THE HARDWARE SUPPLIED.**
- **DO NOT USE THIS PRODUCT FOR ANY VEHICLE MAKE OR MODEL, OTHER THAN THOSE SPECIFIED BY ARB.**
- **DO NOT REMOVE LABELS FROM THIS BULL BAR.**
- **THIS PRODUCT OR ITS FIXING MUST NOT BE MODIFIED IN ANY WAY.**

USE	PART No	QTY	DESCRIPTION
MOUNTING SYSTEM	3756513	1	BRACKET MOUNTING SYSTEM
	6151232	1	BOLT M10 x 30mm
	6151090	2	BOLT M10 x 50mm
	6151091	1	BOLT M10 x 60mm
	4581040	2	WASHER FLAT M10
	4581288	6	WASHER FLAT M10 LARGE O.D.
	4581048	4	WASHER SPRING M10
	6151133	1	NUT M10 x 1.25
	5848288	1	PACKER UPRIGHT
	4581070	1	WASHER FLAT M10 HD
	6151301	3	NUT CAGED M8 (4MM)
	5848328	2	PACKER PAN
	3756509	1	BRACKET CAGED NUT
	6151302	1	NUT CAGED M10
BULL BAR TO MOUNTING SYSTEM	6151232	8	BOLT M10 x 1.5mm
	4581048	8	WASHER SPRING M10
	4581040	16	WASHER FLAT M10
	6151026	8	NUT M10
AIR DAM FROM BAR TO MOUNTING SYSTEM	3314485	1	PAN AIR DAM
	6151022	3	BOLT M8 x 20mm
	4581044	3	WASHER FLAT M8
	4581046	3	WASHER SPRING M8
	6151180	4	BOLT M6 x 20mm
	4581072	4	WASHER FLAT M6 LARGE
	4581036	4	WASHER SPRING M6
	6151300	4	NUT CAGED M6 (3MM) BULL BAR
GRILL BRACKETS	3756511 L/R	1 PAIR	GRILL BRACKETS (L/RHS)
BRACKET INTERCOOLER (TURBO DIESEL ONLY)	3756510	1	BRACKET INTERCOOLER
	6151083	1	BOLT M8 x 35mm
	6151044	1	WASHER FLAT M8
	6151132	1	NUT FLANGE M8
INDICATOR KIT	3500080	1	INDICATOR KIT
GRILL BRACKETS	3756511 L/R	1 PAIR	BRACKETS GRILL
NUMBER PLATE	6151017	2	BOLT M6 x 16mm
	6151046	2	WASHER FLAT M6
	6151128	2	NUT FLANGE M6

PARTS BELOW TO BE USED IN A WINCH BAR

8-9000lb WINCH	4581040	4	WASHER FLAT 3/8" x 1"
	6151074	2	BOLT 1 3/4" x 3/8" UNC
	180302	8	CABLE TIES
CONTROL BOX BRACKET	6151021	2	BOLT M8 x 20mm
	4581044	2	WASHER FLAT M8
	3751564	1	CONTROL BOX BRACKET (WINCH BAR ONLY)
	3751471	1	CONTROL BOX BRACKET (POLICE BAR ONLY)
	6151132	2	NUT FLANGE M8
NUMBER PLATE BRACKET	6151046	2	WASHER FLAT M6
	6151128	2	NUT FLANGE M6
	6151017	2	BOLT M6 x 16mm (NUMBER PLATE TO BRACKET)
	3751313	1	NUMBER PLATE BRACKET

TOOLS REQUIRED.

BASIC TOOL KIT, CUTTERS (INNER PLASTIC GUARDS), DRILL, 10MM DRILL BIT, 14MM STEPPED RING SPANNER.

**ASSEMBLY SEQUENCE FOR BULL BAR INSTALLATION.
PLEASE READ AND UNDERSTAND FITTING INSTRUCTIONS BEFORE
ATTEMPTING TO FIT BAR TO VEHICLE**



- 1. Remove bumper from vehicle**
- 2. Remove grille from vehicle.**
- 3. Be careful when removing bumper and grille from vehicle as the plastic clips are awkward to undo and can break.**



- 4. Remove all brackets as shown in photo.**

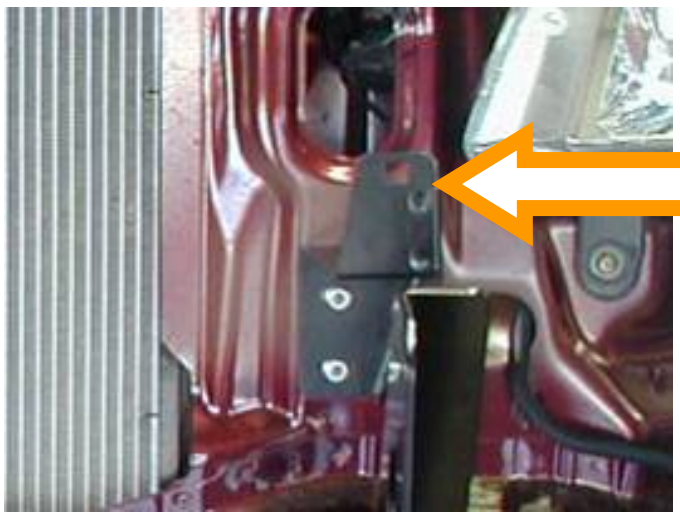


- 5. Vehicle must be prepared as per photo to fit mounting system to vehicle.**

(Vehicle in photo is a turbo diesel model)



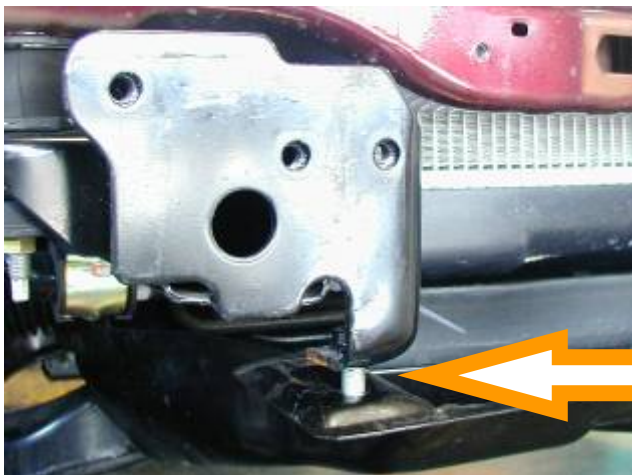
6. If vehicle has a diesel turbo inter cooler engine, fit bracket in between 6mm studs and cooler mount bracket and secure to 6mm studs using original 6mm nuts. Secure front section using a 35mm x 8mm bolt, flat washer and 8mm flange nut.



7. Fit grill mounting bracket to original grill mount 6mm studs, Tighten using original 6mm nuts.

Finger tighten only.

Photo is of LHS of vehicle.



8. Remove the two front bolts from vehicle sump guard and loosen off the two rear splash pan bolts.

Photo is of RHS of vehicle



9. To fit mounting system to vehicle, follow the steps in the next pictures.

Fit original vehicle bolts to front of mounting system. Fit washers under non washered bolts.

Fit an M10 panel washer under the head of each bolt.

NOTE: Leave these bolts finger tight at this stage.



10. Fit original non washered bolts to outside of mounting system

Fit an M10 panel washer under the head of each bolt.

NOTE: leave these bolts finger tight at this stage.



11. Fit spacer in between vehicle tie down and bar mounting system and secure using 60mm x 10mm bolt plus 10mm hardware. Use the heavy duty washer on the inside of vehicle tie down and tighten bolt until the washer starts to deform.

Centralise the mounting system so that the surfaces that mount to the bull bar are vertical

Tighten all bolts to the recommended torque.



12 When all other bolts are fitted, using hole in rear bracket on mounting system as template, drill out using a 10mm drill bit



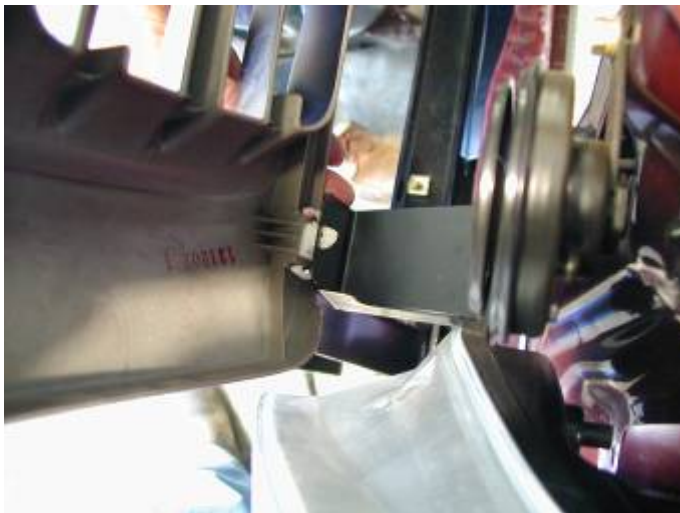
13 Fit caged nut bracket through mounting system hole.



14. Secure from underneath using a 10mm x 30mm bolt, spring / flat washer and nut.



15. Fitting M8 caged nut into of mounting system crossmember.



16. When fitting vehicle grille back into new lower mounting brackets, make sure the plastic clips on the grille lock into square holes in brackets. When grille is refitted, tighten brackets to vehicle.



17. When fitting vehicle sump guard back to vehicle, fit spacers in between bar mounting system and sump guard and secure using 50mm x 10mm bolts etc. Tighten all bolts when fitted.



18. If vehicle is to be fitted with a winch bar, follow the next steps.

Handle is in normal position



**19. Rotate handle 72° counter clockwise.
20. Stand winch upright and undo the capped head screws and by lifting the gearbox only a couple of millimetres, rotate the gearbox. Once in position, refit all screws and tighten firmly.**

WARNING

Do not lift gear box more than a couple of millimetres.

NEW HOLES



21. Drill out roller fairlead 25mm lower than original hole using a 12mm drill bit.



22. Fit rubber grommet to bar.

23. Fit number plate bracket to bar using 6mm hardware.

24. Fit control box bracket to bar using 8mm hardware.



24. Fit indicators into bar



25. Fit winch into bar using 1 1/2" x 3/8" bolt on top holes and 1 3/4" x 3/8" bolt on the lower holes plus 25mm larger flat washers and spring washers.

Cable pull from bottom of winch.





26. If fitting the XP 9.5 winch, remove the cover from the control box.

For any other winch, go to step 33.

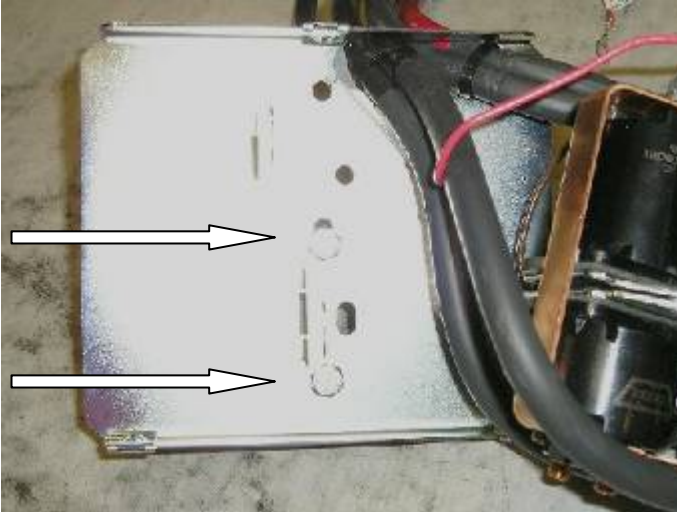


27. Remove the two cap screws, nuts and spacer washers that hold the four solenoids in place.

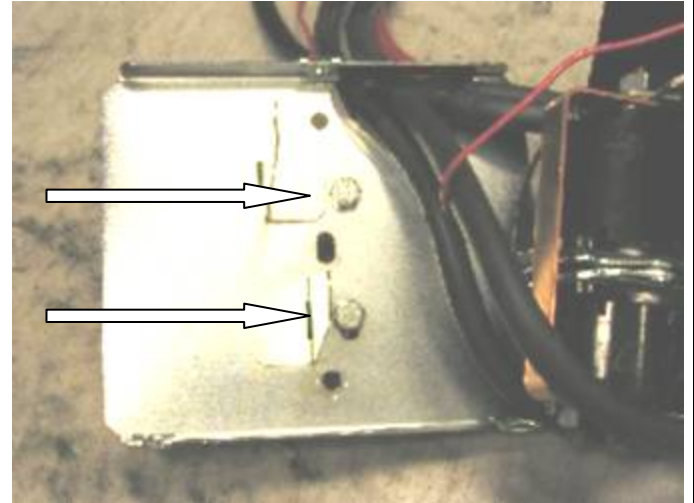


28. Remove the four solenoids from the base of the control box using the copper bus bar as an aid and hold to one side.

29. Remove the two bolts in the base of the control box and reposition them into the more centralised holes

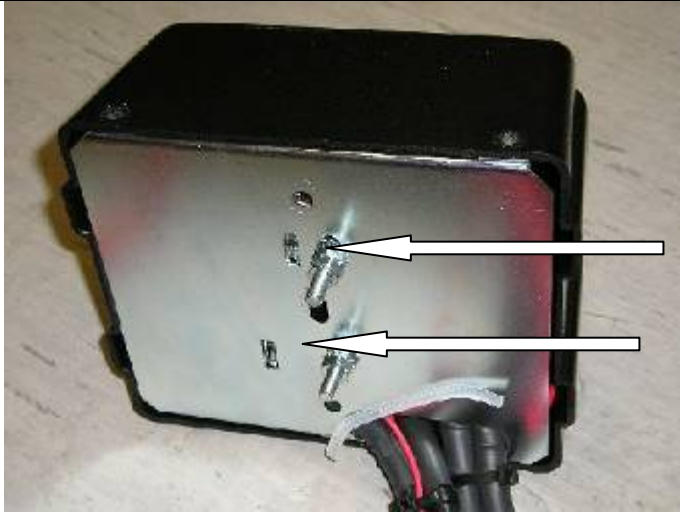


Before



After

30. Place the 4 solenoids over the 2 metal stands that are facing upwards. Make sure they line up with the holes in the base.



31. Replace the 2 cap screws, washers and nuts removed in step 27 above into original holes.

32. Replace the black cover and refit the three cover screws (DO NOT OVER TIGHTEN)





33. Fit control box to bar and connect all power cables to winch motor as per warn instructions.

34. Connect ground wire to winch tension bar.

35. Cable tie all cables together and keep clear of sharp edges and all moving parts.

When bar is fitted to vehicle, fit both power cables to battery and cable tie to vehicle keeping clear of all moving parts.



36. Position bar in between mounting system on vehicle and secure using 30mm x 10mm bolts, washers and nuts. Finger tighten only.



37. Adjust bar so there is a 20mm gap around the periphery of the vehicle, then tighten all bolts firmly.



38. When all bolts are tighten (bar to mounting system) using lower hole on bar as template, drill through using a 10mm drill bit.



39. Secure using 30mm x 10mm bolt, flat spring washers and nuts, tighten firmly. This is the pinning bolt.



40. Cut inner guard plastic trim off so it does not protrude past lower section of bar.



41. Using hole in lower section of vehicle bulkhead panel, drill through plastic inner guard using a 8mm drill bit.



42. Cable tie plastic inner guard to panel and trim cut.



43. Fit air dam pan to bar using 6mm and 8mm hardware to mounting system.



44. Fit number plate to number plate bracket using 6mm hardware.

45. Wire indicators to vehicle loom using scotch locks.

